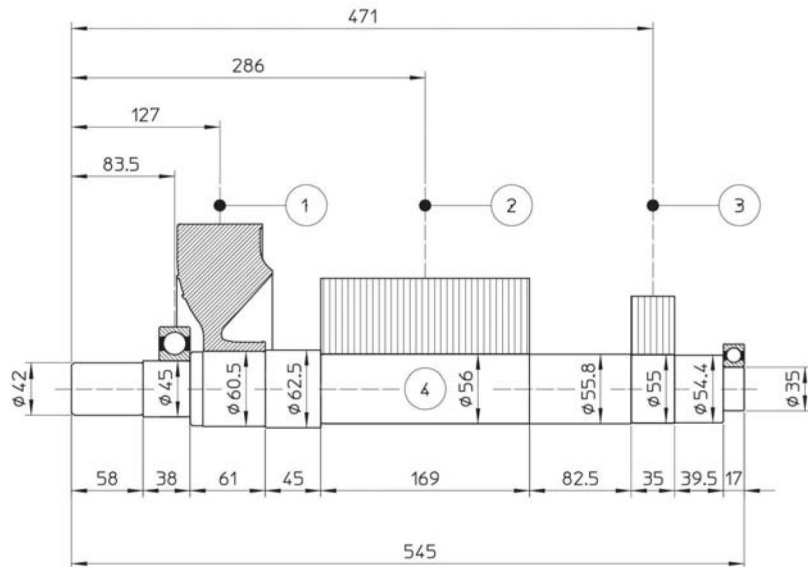
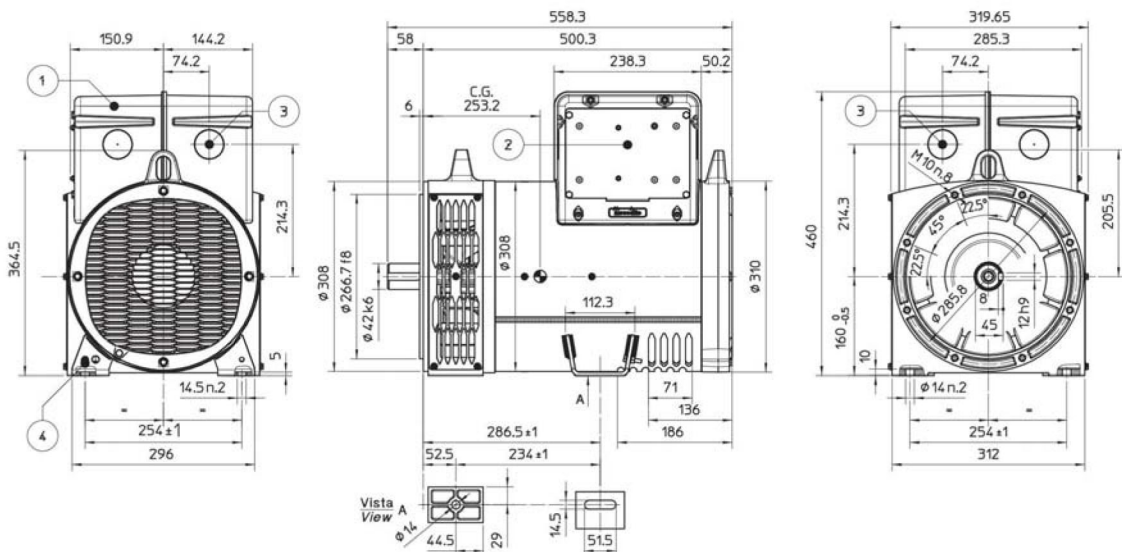


TWO BEARING MOMENTS OF INERTIA



POS.	COMPONENT	WEIGHT (kg)	J (kgm ²)
1	FAN	0.7	0.0046
2	MAIN ROTOR	24.5	0.0981
3	EX. ROTOR	4.4	0.0138
4	SHAFT	9.7	0.0038
TOTAL		39.3	0.1203

TWO BEARING DIMENSIONS



- 1) COPERCHIO REMOVIBILE PER ACCESSO AI TERMINALI PRINCIPALI
REMOVABLE COVER FOR ACCESS TO MAIN TERMINALS
- 2) PANNELLO REMOVIBILE PER ACCESSO AL REGOLATORE
REMOVABLE PANEL FOR ACCESS TO AVR
- 3) PRE-TAGLIO PER INGRESSO CAVI $\phi 8mm$
PRE-CUT FOR CABLE ENTRY $\phi 8mm$
- 4) VITE M6 PER MESSA A TERRA
SCREW M6 FOR GROUNDING

C.G.= GRAVITY CENTER

