



ECP32

MECCALTE spa - Via Roma, 20 - 36051 CREAZZO (VI) ITALY
Tel. +39 0444/396111 - Fax +39 0444/396166 - e-mail: info@meccalte.it
website: www.meccalte.com

C-TYPE
2 POLE

CHARACTERISTICS

INDUSTRIAL RATINGS

ambient 40 ° C

Type 50 Hz	kVA cosφ 0.8 - 3 Phase continuous							Efficiency			1 Phase kVA COSφ 1 CL. H (ΔT = 125°C) DELTA
	CL. H (ΔT= 125°C)				CL. F (ΔT= 105°C)			η % CL. H (ΔT= 125°C)			
	380	400	415	IP45 400V	380	400	415	2/4	3/4	4/4	
Series Star Δ	380	400	415		380	400	415				
Parallel Star $\Delta\Delta$	190	200	208		190	200	208				
Series Delta Δ	220	230	240		220	230	240				
Parallel Delta $\Delta\Delta$	110	115	120		110	115	120				
ECP32 1S2 C	44	44	44	35	40	40	40	84,8	87,7	87,4	29
ECP32 2S2 C	50	50	50	38	45	45	45	85,4	88,5	88,1	33
ECP32 M2 C	66	66	65	50	60	60	59	85,5	88,6	88,4	43
ECP32 L2 C	82	82	80	60	75	75	73	86,5	89,4	89	54

Type 60 Hz	kVA cosφ 0.8 - 3 Phase continuous							Efficiency			1 Phase kVA COSφ 1 CL. H (ΔT = 125°C) DELTA
	CL. H (ΔT= 125°C)				CL. F (ΔT= 105°C)			η % CL. H (ΔT= 125°C)			
	440	460	480	IP45 480V	440	460	480	2/4	3/4	4/4	
Series Star Δ	440	460	480		440	460	480				
Parallel Star $\Delta\Delta$	220	230	240		220	230	240				
Series Delta Δ	254	265	277		254	265	277				
Parallel Delta $\Delta\Delta$	127	133	138		127	133	138				
ECP32 1S2 C	51	53	53	42	46	48	48	86,8	89,5	89,2	35
ECP32 2S2 C	58	60	60	46	52	54	54	86,8	89,7	89,5	39
ECP32 M2 C	75	79,5	79,5	60	68	72	72	86,3	90,4	90,2	51,5
ECP32 L2 C	93	98,5	98,5	72	85	90	90	87,2	90,8	90,5	65

STANDBY RATINGS

Type	kVA Temp. Rise / Ambient °C			kVA Temp. Rise / Ambient °C		
	50 Hz			60 Hz		
	163° / 27°	150° / 40°	125° / 27°	163° / 27°	150° / 40°	125° / 27°
ECP32 1S2 C	48	46	46	58	55,5	55,5
ECP32 2S2 C	54	52	52	65	63	63
ECP32 M2 C	71	69	69	85	83	83
ECP32 L2 C	89	85,5	85,5	107	103	103

Type	J (kgm ²) B3-B14 FORM	Weight (kg)	Air Volume		Noise dB (A)				
					50 Hz		60 Hz		
			50 Hz (m ³ /min)	60 Hz (m ³ /min)	1m	7m	1m	7m	
ECP32 1S2 C	0,1334	173							
ECP32 2S2 C	0,1774	199							
ECP32 M2 C	0,2004	212							
ECP32 L2 C	0,2414	231							
			22,4	27	88	77	93	80	

ACCESSORIES

REGULATOR				PARALLEL DEVICE	THERMAL PROTECTION			HEATERS	MECHANICAL PROTECTION	
DSR	DER-1	SR7/2	UVR6		PTC	BIMET DEVICE	PT100		IP23	IP45
<input checked="" type="checkbox"/>	<input type="checkbox"/>	<input type="checkbox"/>	<input type="checkbox"/>	<input type="checkbox"/>	<input type="checkbox"/>	<input type="checkbox"/>	<input type="checkbox"/>	<input type="checkbox"/>	<input checked="" type="checkbox"/>	<input type="checkbox"/>

● = Standard

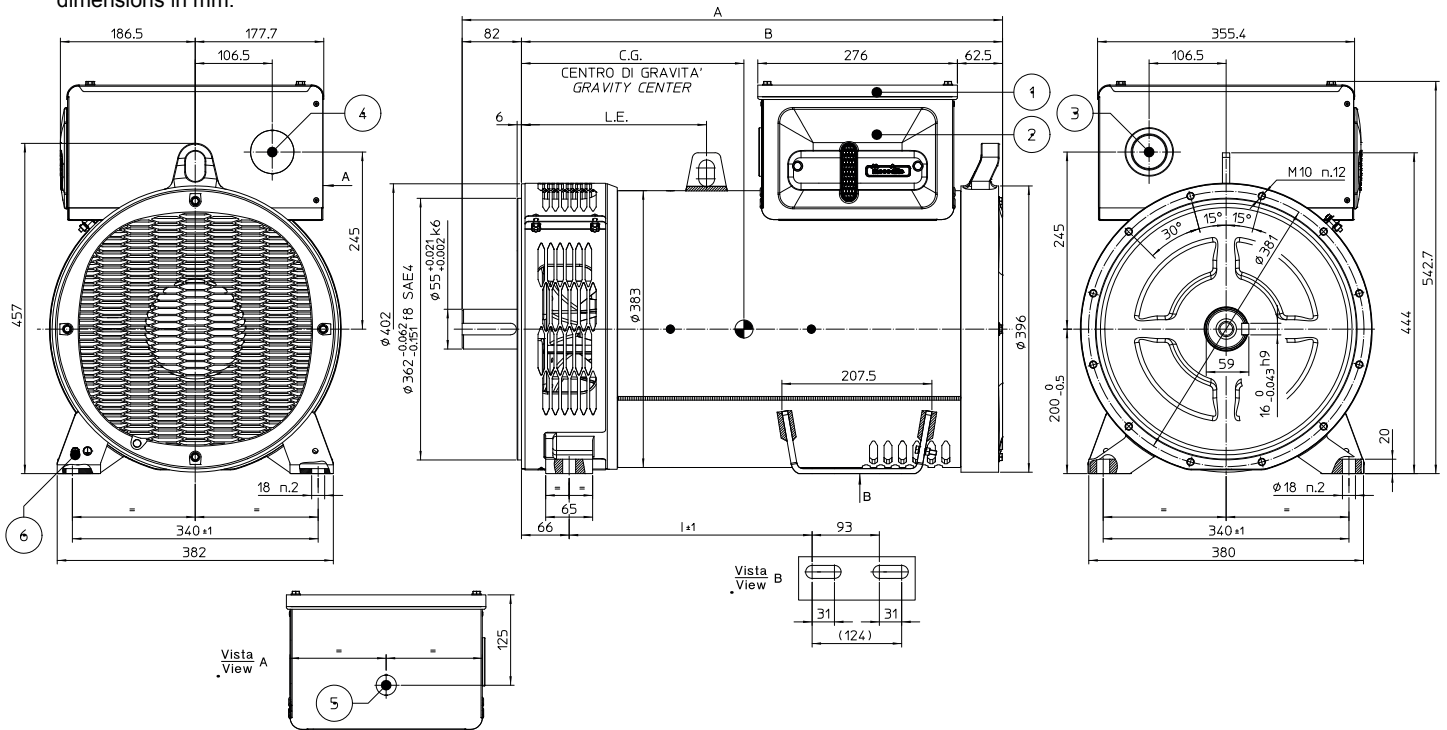
□ = Optional



OVERALL DIMENSIONS B3B14 FORM



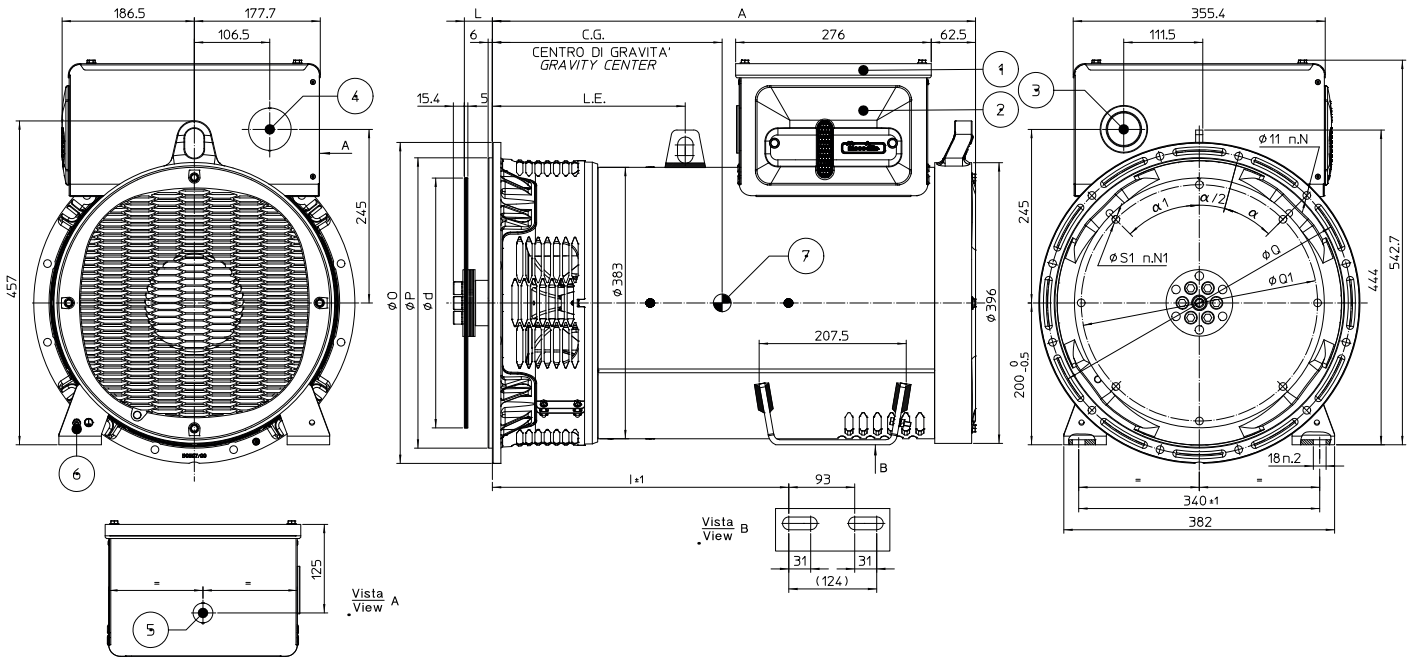
dimensions in mm.



OVERALL DIMENSIONS MD35 FORM



dimensions in mm.



SERIE	MODELLO	A	B	I	L.E.	C.G.
SERIES	MODEL					
ECP32C/2 B3B14	1S	617.5	535.5	118	167	255.7
	2S	617.5	535.5	118	167	251.6
	M	687.5	605.5	243	196	293.6
	L	747.5	665.5	336	256	321.3

SERIE	MODELLO	A	I	L.E.	C.G.
SERIES	MODEL				
ECP32C/2 MD35	1S	551.5	200	183	288.7
	2S	551.5	200	183	282.1
	M	621.5	325	212	324.4
	L	681.5	418	272	351.4

SAE N.	FLANGIA/FLANGE BRIDE/FLANSCH				
	O	P	Q	α	N
5	356	314.3	333.4	45°	8
4	402	362.0	381.0	30°	12
3	453	409.6	428.6	30°	12
2	490	447.7	466.7	30°	12
1	553	511.2	530.2	30°	12

SAE N.	GIUNTI A DISCHI / DISC COUPLING DISQUE DE MONOPALIER / SCHEIBENKUPPLUNG					
	d	L	Q1	S1	α1	N1
6 1/2	215.90	30.2	200.00	9	60°	6
7 1/2	241.30	30.2	222.25	9	45°	8
8	263.52	62.0	244.47	11	60°	6
10	314.32	53.8	295.27	11	45°	8
11 1/2	352.42	39.6	333.37	11	45°	8

- 1) COPERCHIO REMOVIBILE PER ACCESSO AI TERMINALI PRINCIPALI
REMOVABLE COVER FOR ACCESS TO MAIN TERMINALS
- 2) PANNELLO REMOVIBILE PER ACCESSO AL REGOLATORE
REMOVABLE PANEL FOR ACCESS TO AVR
- 3) FORO STANDARD PER INGRESSO CAVI Ø60mm
STANDARD HOLE FOR CABLE ENTRY Ø60mm
- 4) PRE-TAGLIO SU PANNELLO PRINCIPALE PER INGRESSO CAVI Ø60mm
PRE-CUT ON MAIN PANEL FOR CABLE ENTRY Ø60mm
- 5) PRE-TAGLIO SU PANNELLO LATERALE PER INGRESSO CAVI Ø28mm
PRE-CUT ON LATERAL PANEL FOR CABLE ENTRY Ø28mm
- 6) VITE M6 PER MESSA A TERRA
SCREW M6 FOR GROUNDING
- 7) CENTRO DI GRAVITA' IN CONFIGURAZIONE SAE 3 VOLANO 11.5
GRAVITY CENTER IN CONFIGURATION SAE 3 FLYWHEEL 11.5