



## Panda 8 Mini PVMV-N

### General Technical Data

Model.:	<b>Panda 8 Mini PVMV-N</b>
Generator Type	<b>Premium Line - Panda Standard Asynchronous (60Hz)</b>
Generator Family	<b>8 Mini</b> <ul style="list-style-type: none"> <li>external 12V fuel pump</li> </ul>
Generator Version.:	<b>PVMV-N</b> <ul style="list-style-type: none"> <li>Requires external radiator</li> <li>Suitable for keel cooling on boats</li> <li>Suitable for internal installation</li> <li>Best choice, when space and length available</li> <li>Complete water-cooled silencer inside capsule</li> </ul>
Article number.:	<b>0014785</b>
Additional Features	<ul style="list-style-type: none"> <li>Watercooling for Engine and Winding (Single-Circuit Cooling)</li> <li>12V/10A Alternator for charging the starter battery</li> </ul>
Area of Application.:	Vehicle Generator (V)
Frequency [Hz]	60
Generator manufacturer	Fischer Panda GmbH
Isolation class of windings	H
Nominal Speed [rpm]	3600
Voltage Regulation	VCS
Voltage Tolerance with VCS (up to 80% Performance)	± 3V

### Electrical Alternator

Windings available:

- 1-Phase (120V)
- 3-Phase (208V)

**Single Phase Winding - Standard version**

Alternator Type	HP1
Nominal Voltage in Volt	120
Power rating factor Cos Pi	1.00
Nominal Performance in kW <sup>1)</sup>	7.50
Nominal Performance in kVA <sup>1)</sup>	7.5
Continuous Performance in kW <sup>1)</sup>	6.7
Continuous Performance in kVA <sup>1)</sup>	6.8
Number of Phases	1
Frequency [Hz]	60

1) up to Panda 15000 / 12-4 cosPhi 0,85 for short take-off power to inductive loads, otherwise cosPhi1

1) from Panda 18 /17-4 on cosPhi 0,85 optional startup performance with compensation or starting current boost, otherwise cosPhi1

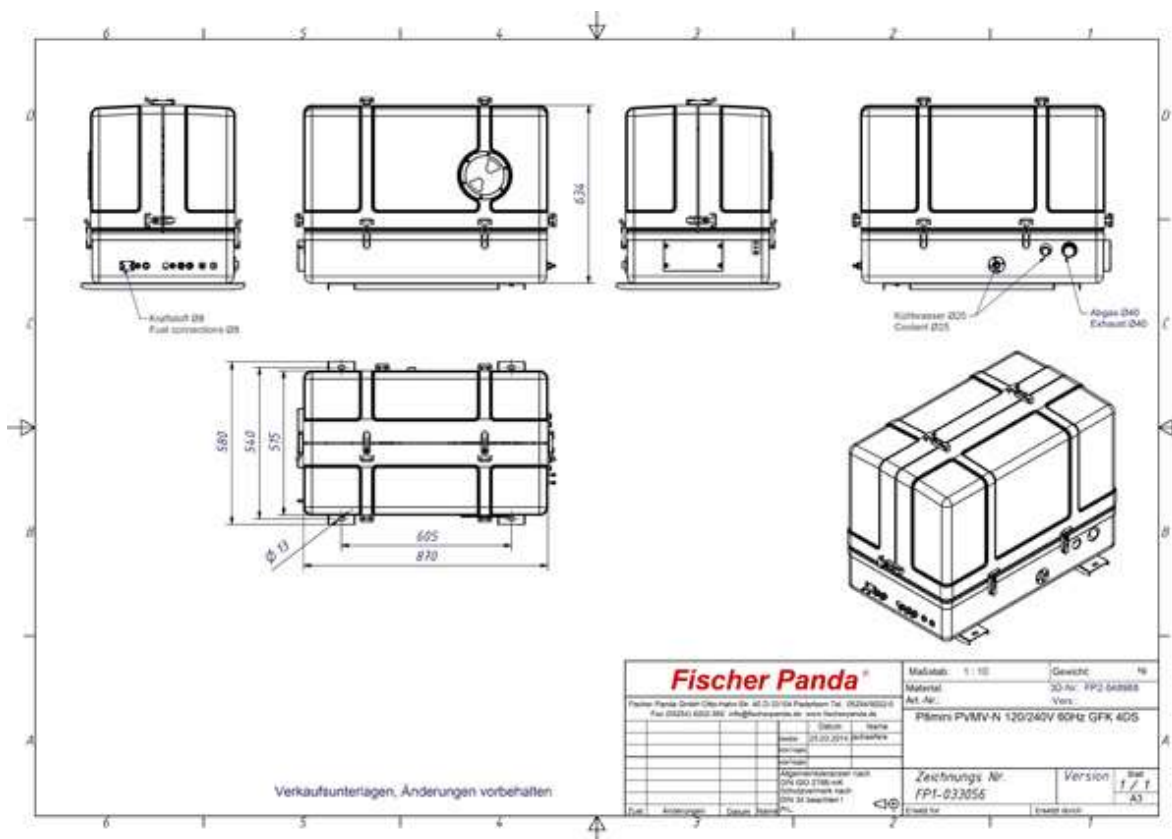
The technical parameters / output performance may vary for different generator types and exhaust emission norms for different countries.

All performance data applies to generator operation at 100m above sea level at 20°C. Performance reductions can occur when operating at greater heights.

## Engine Data

Engine Manufacturer	Kubota (KU)
Engine Type	Z482
No. Cylinders	2
Displacement [cm <sup>3</sup> ]	479
Starter System	12V (24V Optional)

## Sound Insulation Cover (Generator Housing / Sound Shield)



(/images/gensets/capsules/FP1-033056.pdf)



(/images/gensets/capsules/FP1-033056.pdf)

PDF (/images/gensets/capsules/FP1-033056.pdf)

Version	GFK 4DS
Article Number	<b>0014785</b> CAD REF:0000374
Drawing Ref.	FP1-033056 (/images/gensets/capsules/FP1-033056.pdf)