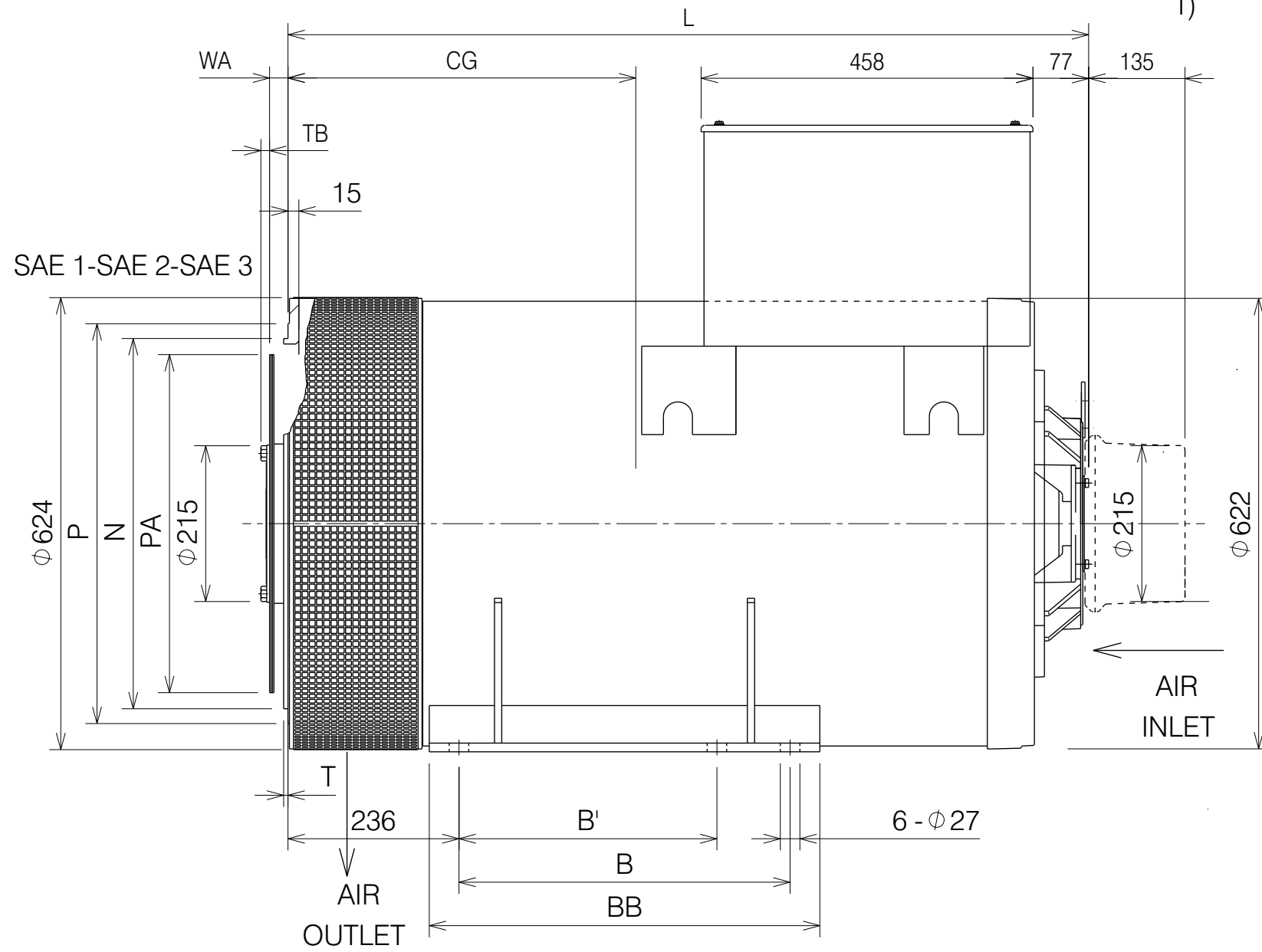
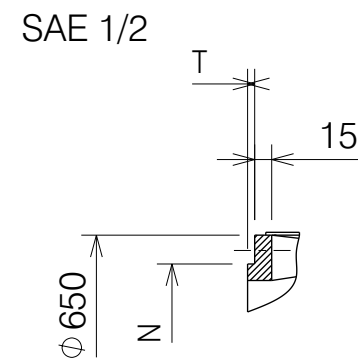
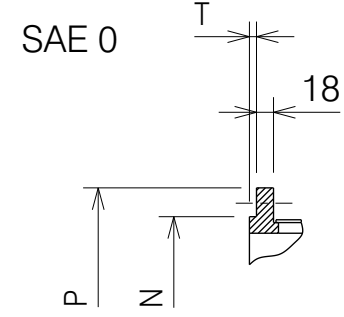


DIMENSIONS IN mm

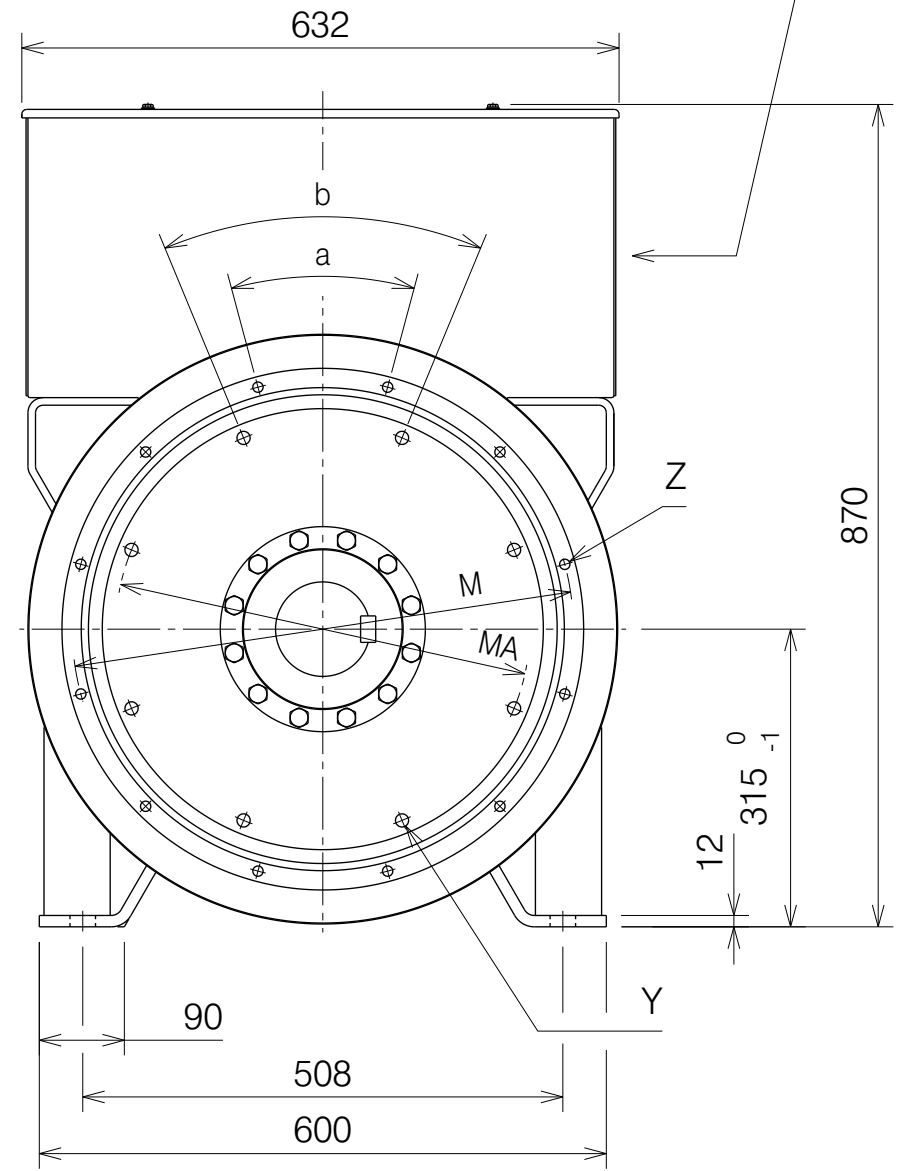
1) PMG OPTIONAL

G = CENTER OF GRAVITY

CHANGES RESERVED



CABLE OULET TO THE RIGHT OR TO THE LEFT



TYPE	DIMENSION				
	L	B'	B	BB	CG
SA	945	267	368	450	410
SB					440
MA	1105	356	457	540	470
MB					505

COUPLING SAE J620	COUPLINGS				
	FLANGE SAE J617				
	3	2	1	1/2	0
11.5	X	X			
14			X	X	X
16				X	X
18					X

SAE J617	DIMENSION														
	FLANGE							COUPLING					WA	TB	
	N	P	M	T	Z	a	SAE J620	PA	MA	Y	b				
$-.0_{.13}^0$				N°	O		N°	O							
3	409.58	451	428.62	5	12	11.5	30°								
2	447.68	490	466.72	5	12	11.5	30°	11.5	352.42	333.4	8	11	45°	39.6	12
1	511.18	552	530.22	6	12	11.5	30°	14	466.72	438.2	8	14	45°	25.4	12
1/2	584.20	648	619.20	6	12	14	30°	16	517.52	489.0	8	14	45°	15.7	15
0	647.70	711	679.50	6	16	14	22.5°	18	571.50	542.9	6	18	60°	15.7	15

REV	DESCRIPTION	PREP'D	CHK'D	APPR'D	DATE
A	ADDED COLUMN FOR SAE 3 11.5	D.Ferraro	I.Graizzaro	G.Peruzzi	18/10/2019
=	FIRST ISSUE	E.Pretto	E.Soso		03/11/2015
ECO:	HEAT TREATMENT:	MAT:	IND. ENG. CHK'D:		
JOB:	SURFACE TREATMENT:	RAW MAT.CODE:			
MarelliMotori Inspired solutions		DIMENSIONS WITHOUT TOLERANCES PRECISION DEGREE: (TN F 3661)		A3	
		DIMENSION: mm		WEIGHT (kg):	
		SCALE: 1:1		n/a	
SYNCHRONOUS GENERATOR			M00AV414BW		
SINGLE BEARING MJB 315 B2			A		
This document is the property of Marelli Motori S.p.A. No part of this document may be copied or reproduced in any way. This information is subject to constant review. Measurements on printed drawing are not allowed, any missed dimension or information on the drawing must be pointed out to MarelliMotori.			SHEET: 1 OF: 1		