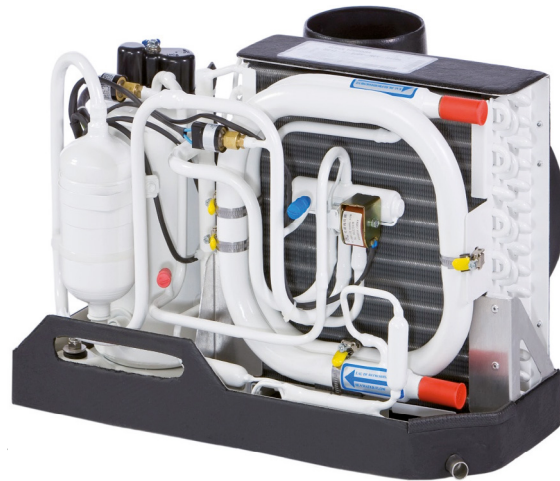


Self-contained air-conditioners

BlueCool S-Serie 230 V



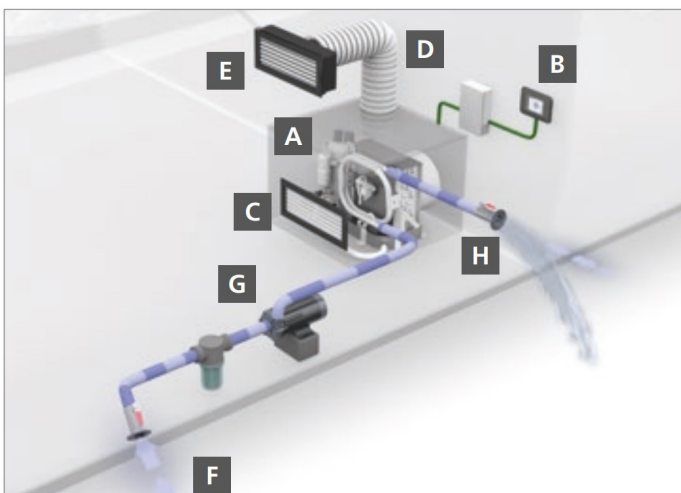
Our self-contained air-conditioning units are the perfect solution for vessels with up to three cabins. High-efficiency compressors guarantee extra-low power consumption. These air-conditioners are very compact and thus also very easy to retrofit. The complete range offers high performance although the units are quiet and very compact.

The S-Series offer a unique feature with the BlueCool Expert Tool that is connected via a single USB cable to a PC. On site servicing and remote assistance are now a child's play.

Advantages at a glance:

- Technically updated to be fully 50/60 Hz compatible
- Suitable for worldwide usage
- Very high efficiency, using R410a refrigerant
- Continuous operation even under tropical conditions
- USB diagnosis for easy servicing and parameter setting
- Quiet operation
- Robust design
- Soft start devices available as an option
- Vibration absorber kits available as an option

BlueCool Self contained systems



Installation example:

- A** Air-conditioning unit
- B** Control box with MyTouch display
- C** Supply air grille
- D** Air ducting
- E** Supply air grille
- F** Sea water inlet
- G** Sea water pump
- H** Overboard discharge



Marine

Technical Specifications

Model	S6	S8	S10	S13	S16	S20	S27
Cooling capacity (BTU / h)	6,000	8,000	10,000	13,000	16,000	20,000	27,000
Cooling capacity (kW)	1.8	2.4	2.9	3.8	4.7	5.9	7.9
Heating via reverse cycle integrated	yes	yes	yes	yes	yes	yes	yes
Voltage (V)	230	230	230	230	230	230	230
Frequency (Hz)	50 / 60	50 / 60	50 / 60	50 / 60	50 / 60	50 / 60	50 / 60
Current draw running (230 V) (A)	2.0 - 2.4	2.4 - 3.5	2.6 - 4.0	3.6 - 6.3	4.9 - 7.1	5.9 - 8.9	7.0 - 10.5
Current draw Start max. peak (230 V) (A)	14	28	27	37	54	60	77
Air flow (free blowing) (230 V) (m ³ / h, cfm)	275 / 162	275 / 162	400 / 235	500 / 294	625 / 368	625 / 368	2 x 550 2 x 324
Sea water connection (mm / inch)	19 3 / 4	19 3 / 4	19 3 / 4	19 3 / 4	19 3 / 4	19 3 / 4	19 3 / 4
Minimum sea water flow at 50 Hz (230 V) (l / min.)	6	8	10	12	14	17	21
Refrigerant quantity R410a (g)	450	250	280	420	550	520	670
Dimensions unit (L x D x H) (mm / inch)	400 x 320 x 305 15.7 x 12.6 x 12.0	400 x 320 x 305 15.7 x 12.6 x 12.0	475 x 330 x 310 18.7 x 13.0 x 12.2	500 x 350 x 320 19.7 x 13.8 x 12.6	540 x 350 x 370 21.3 x 13.8 x 14.6	590 x 340 x 370 23.2 x 13.4 x 14.6	570 x 510 x 410 22.4 x 20.1 x 16.1
Dimension electronic box (L x D x H) (mm / inch)	310 x 214 x 83 12.2 x 8.4 x 3.3	310 x 214 x 83 12.2 x 8.4 x 3.3	310 x 214 x 83 12.2 x 8.4 x 3.3	310 x 214 x 83 12.2 x 8.4 x 3.3	310 x 214 x 83 12.2 x 8.4 x 3.3	310 x 214 x 83 12.2 x 8.4 x 3.3	310 x 214 x 83 12.2 x 8.4 x 3.3
Ø Blower connection (mm / inch)	100 / 4	100 / 4	100 / 4	125 / 5	125 / 5	125 / 5	2 x 125 / 2 x 5
Weight core unit (kg)	20	20	22	27	31	34	46
Weight electronic box (kg)	2	2	2	2	2	2	2



BlueCool MyTouch Display

The BlueCool MyTouch display is the new standard display for all BlueCool A/C Series:

- Full color, high resolution, interactive 2,4" touch screen
- Multiple customization options available (design, colors, language, photos, etc.)
- Protected: full access to system configuration parameters
- Compatible with Vimar Eikon, Eikon EVO, Plana, Bticino Axolute



BlueCool MyTouch Display

BlueCool Export Tool suitable for all BlueCool AC units:

- Plug and Play USB connection
- Easy parameter setting
- Real time monitor function
- Continuous data logging
- Manual activation of single components (pumps, compressors, 4 / 2 way valve etc.)
- Possible remote access via internet



Contact details

webasto.com