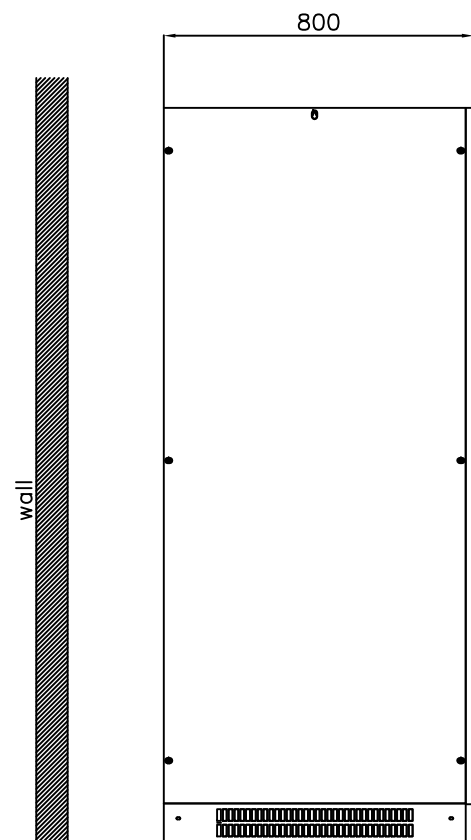
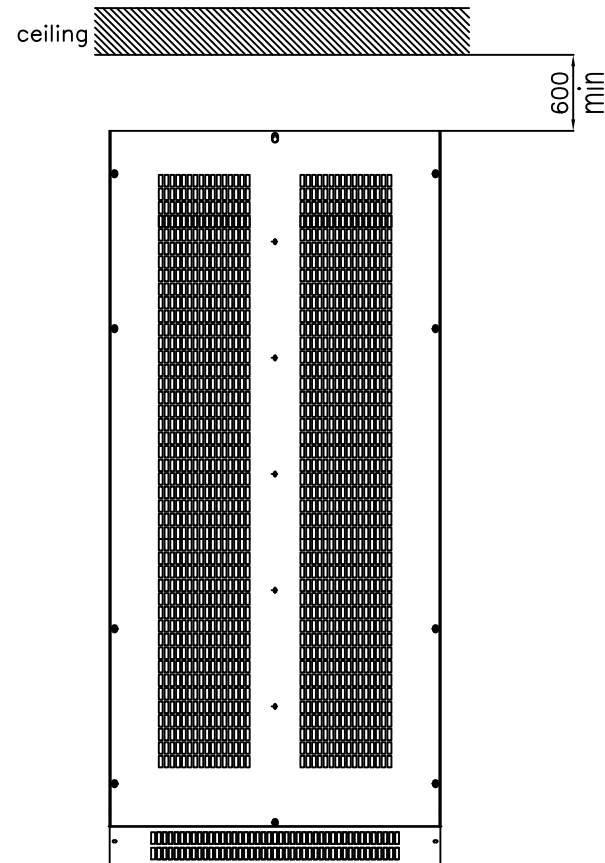


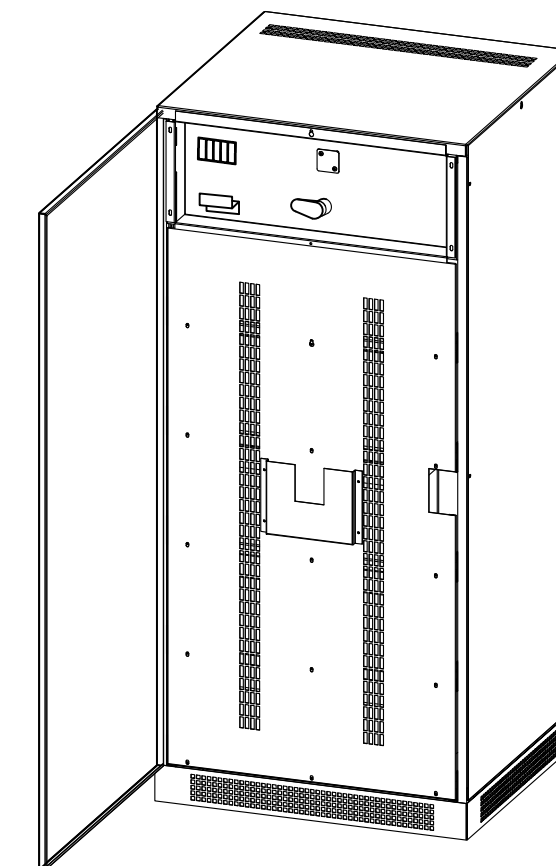
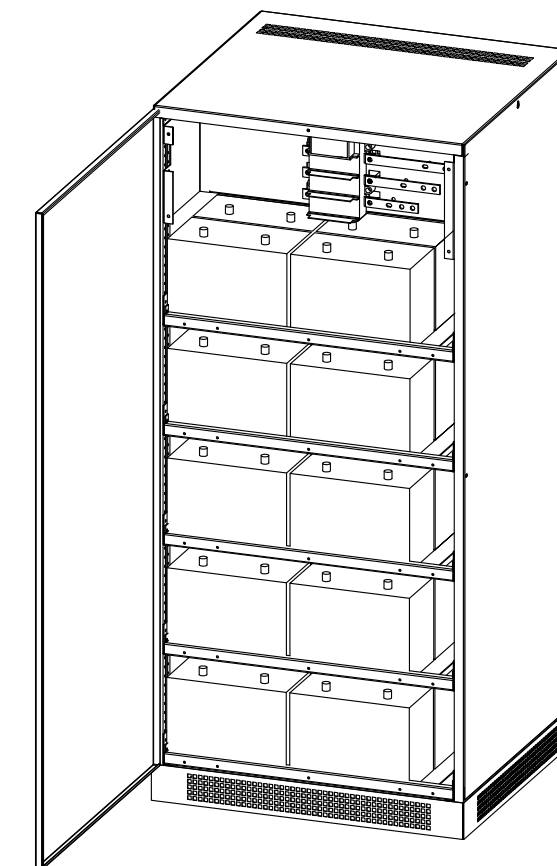
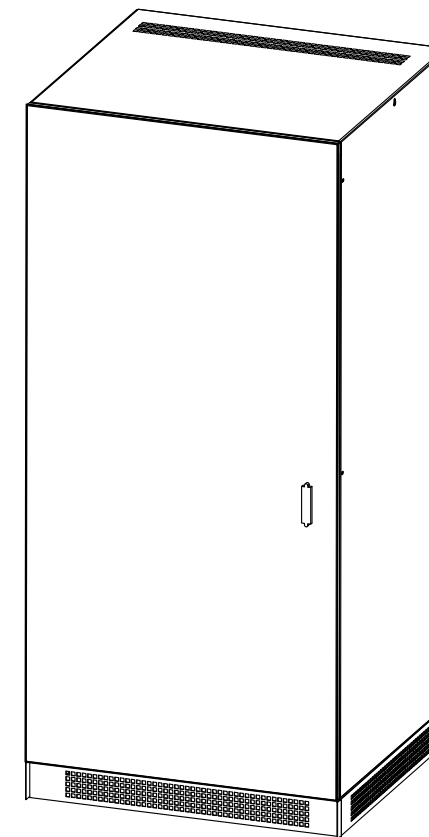
Front view



Left side view

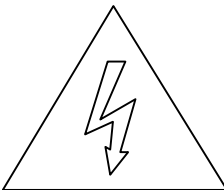


Rear view



BATTERY BOX BBX 20+20 / 40			
BATTERY TYPE [Ah]	60.....70	80.....90	100.....120
FUSE PROTECTION gS (F1,F2,F3)	160A (NH1)	200A (NH1)	250A (NH1)
DIMENSIONS LxDxH [mm]	860x800x1900		
WEIGHT CABINET with BATTERIES [kg]	1130....1170	1210....1490	1490..1770
WEIGHT CABINET EMPTY [kg]	180		
+ / - DIM. CABLE ADVISED(*) [mm <sup>2</sup> ]	2 x 25	2 x 50	
N DIM. CABLE ADVISED [mm <sup>2</sup> ]	2 x 25	2 x 50	
GROUND DIM. CABLE ADVISED [mm <sup>2</sup> ]	25	50	
TORQUE VALUE BATTERY TERMINAL	5 - 7 Nm		
TORQUE VALUE SWITCH TERMINAL	30 - 35 Nm		

(\*)=For each pole




**WARNING!** Close battery switch only when UPS is working. See UPS User Manual.

**WARNUNG!** Batteriesicherung nur schließen, wenn die USV-Anlage in Betrieb ist. Siehe USV Betriebsanleitung.

**ATTENTION!** Serrer le sectionneur de batterie seulement avec l'onduleur en marche. Consulter le manuel de l'onduleur.

**ATENCIÓN!** Cerrar el seccionador de baterías sólo con SAI en marcha. Consultar el manual del SAI.

**ATTENZIONE!** Chiudere il sezionatore di batteria solo con UPS acceso. Consultare il manuale dell' UPS.

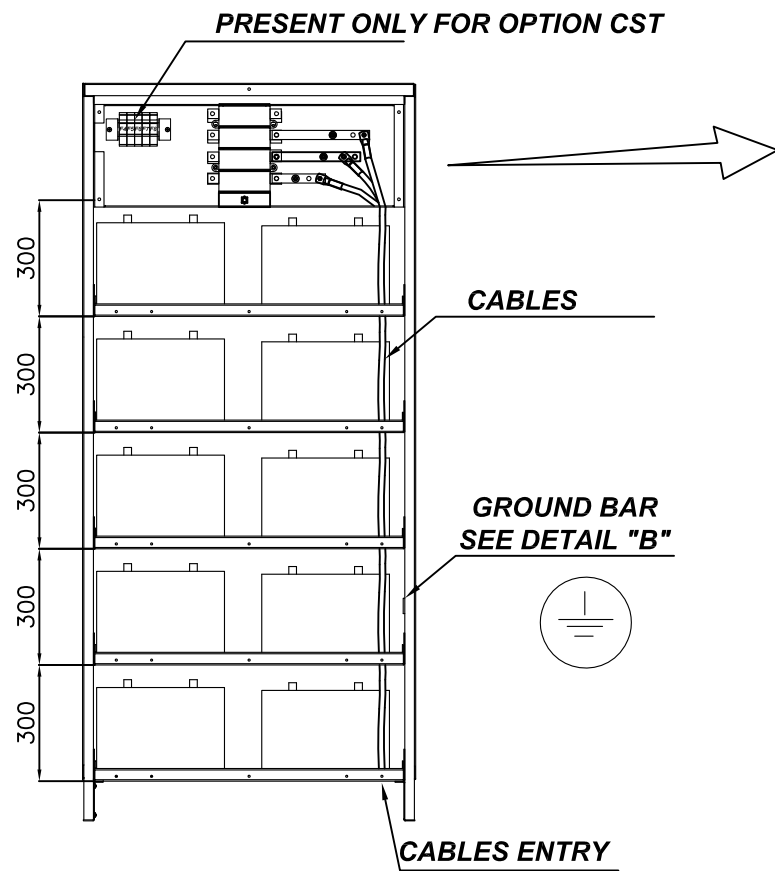


**WARNING**

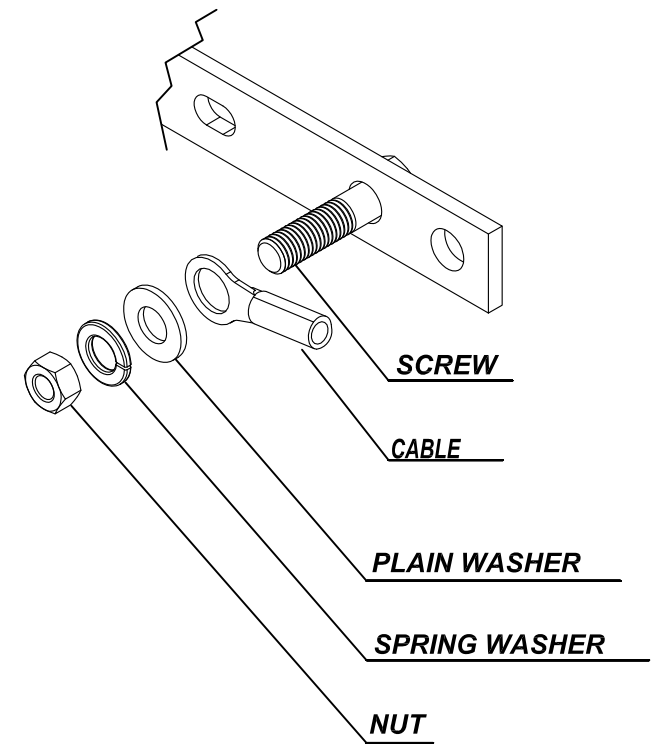
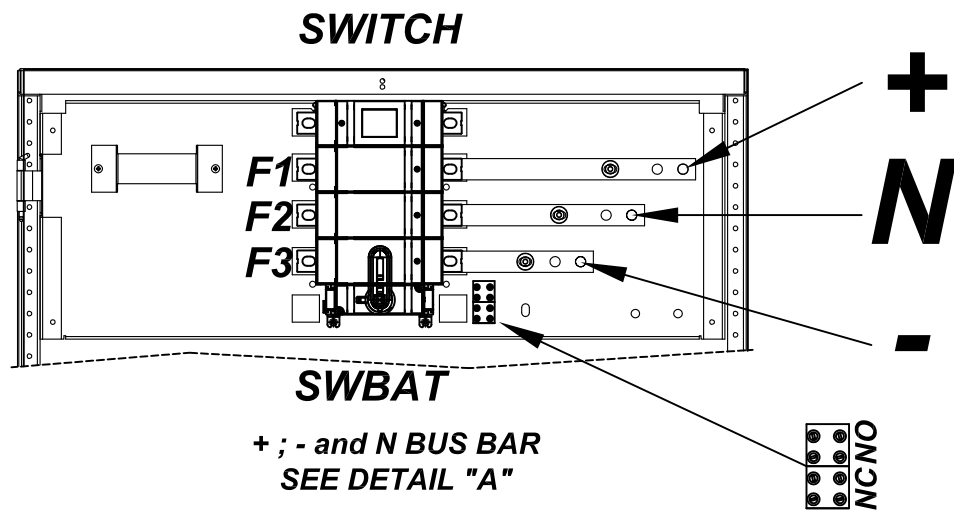
The battery cabinet complete with batteries can only be handled with the side, front and rear panels bolted in place.

CABLE
<p><b>WARNING:</b></p> <ul style="list-style-type: none"> <li>- Size for FG70R "G7 QUALITY HEPR INSULATED" cable type, installed in open air with ambient temperature 30°C and for distance &lt; 15 meters. Contact the service for greater distances</li> <li>- Read the user manual before connecting to the supply</li> </ul>

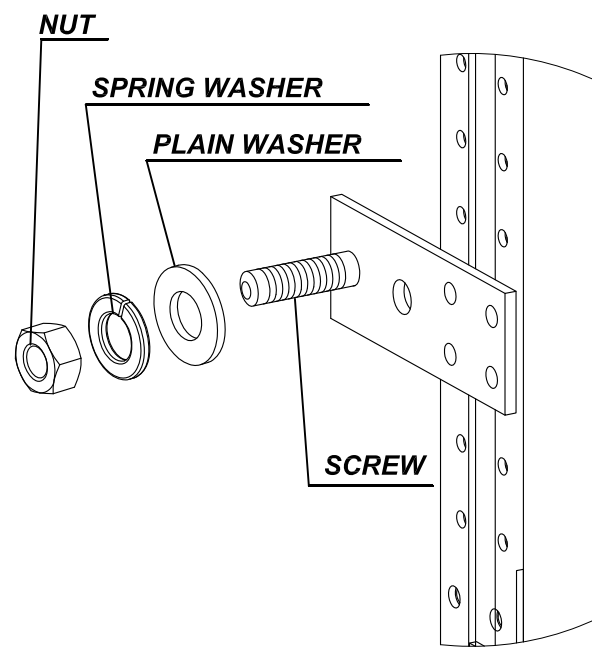
EDIT. I.VETTORI	APPR. I.VETTORI	DATA:17/03/2017	DRAW. No
VARIATION:Added auxiliary contact			OMN190480NPENID
REPLACE:OMN190480NPENIC 00			PAG.1 di 2 CONT. /
NOTE : INSTALLATION DRAWING		TITLE:MAN BAT 190H 480V DRW EN INSTALLATION DRAWING	



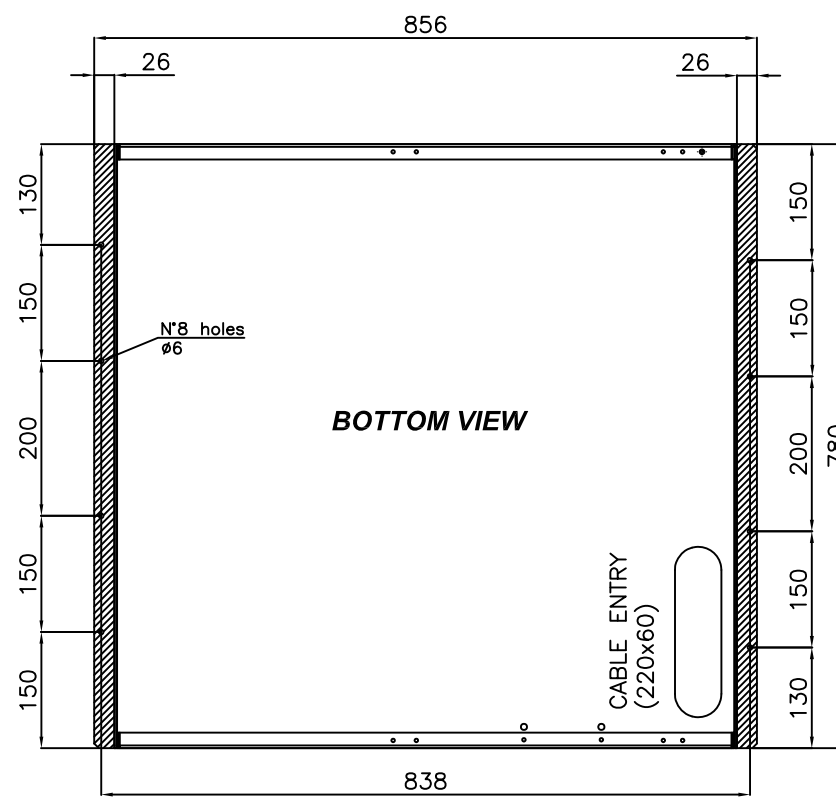
FRONT INSIDE VIEW



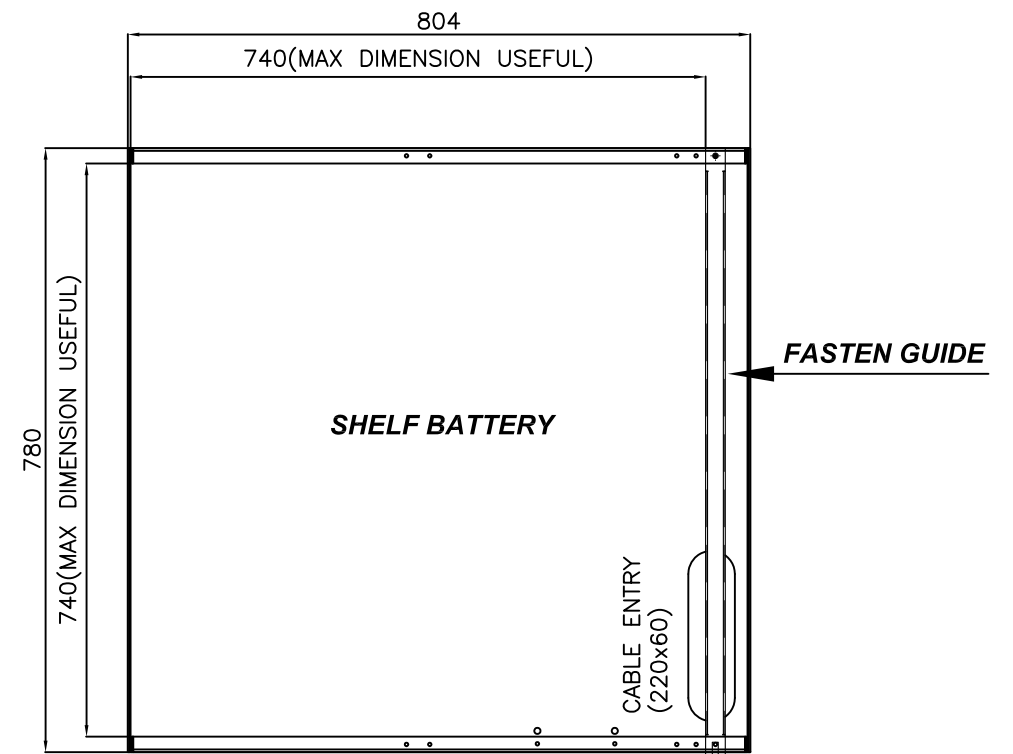
DETAIL "A"  
FIXING CABLE ON + AND - BUS BAR



DETAIL "B"  
FIXING CABLE ON GROUND BUS BAR



FRONT



FRONT

EDIT. I.VETTORI	APPR. I.VETTORI	DATA:17/03/2017	DRAW. No
VARIATION:Added auxiliary contact			OMN190480NPENID
REPLACE:OMN190480NPENIC 00			PAG.2 di 2 CONT. /

NOTE : INSTALLATION DRAWING

TITLE:MAN BAT 190H 480V DRW EN  
INSTALLATION DRAWING