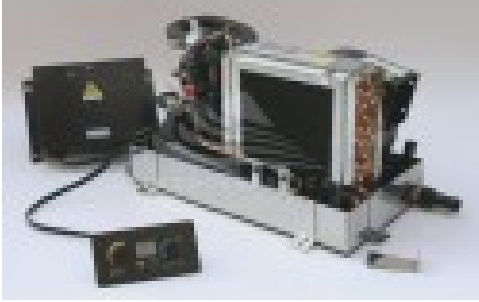


CLIMMA COMPACT 3.5 CO



Product description:

Conditioner CLIMMA Compact 3.5CO Cool only

Independent air conditioner Climma Compact 3.5CO perfect to condition a single room or contiguous environments.

The Climma Compact 3.5CO air conditioner is specially designed for marine applications, just as all air conditioners in the Climma Compact range are water cooled. Compact, quiet and powerful, the Climma Compact 3.5CO air conditioner works with environmentally friendly refrigerant and comes with the option of cycle reversal to heat the environment.

The Climma Compact 3.5CO air conditioner is also available in cold only or electrically heated version.

This version of the Climma Compact 3.5CO air conditioner is cool only.

For multiple installations with two or more air conditioners, a replay box is also available to use a single sea water pump.

Technical characteristics of the Climma Compact 3.5CO air conditioner:

Phase type: Single-phase

Voltage: 115 / 230 V

Frequency: 50 / 60 Hz

Cold capacity: 3500 BTU/h

Duct size: 100 mm

Maximum air flow: 230 m³/h

Length: 281 mm

Width: 204 mm

Height: 227 mm

Weight: 15 Kg

Main advantages:

- Independent air conditioning systems from 3500 to 27000 BTU/h
- Ecological refrigerant R410A for maximum efficiency and minimal consumption



- High efficiency ultra-fine gas-air cooler
- Powered and movable fan
- Pre-wired electrical box
- Threaded brass condensate drain and anti-condensation tray with Climma Dry Pan system
- High efficiency condenser

R410a

Ecological refrigerant that does not contain toxic chemicals that damage the ozone layer.

More efficient cooling system due to better heat exchange and less pressure drop.

If you are looking for another air conditioner like the Climma Compact 3.5CO then you can browse our catalogue reserved for marine air conditioners.

Images and technical data are not binding.

Product features:

Phase: Single phase

Frequency (Hz): 50 / 60

Voltage (V): 115 / 230

Maximum flow (m³/h): 230

Refrigerating yield: 3500 BTU/h

Length (mm): 281

Width (mm): 204

Height (mm): 227

Product type: Air conditioner

Coolant: R410A

Weight (Kg): 15

