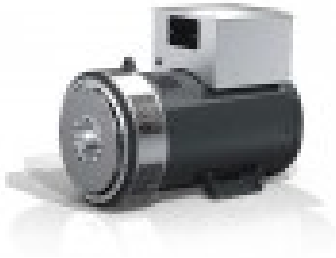


# MECC ALTE ECO38 1S/4 C-TYPE 180KVA THREEPHASE ALTERNATOR



## Product description:

MECC ALTE ECO38 1S/4 C-TYPE THREEPHASE 180KVA ALTERNATOR WILL AVR

The alternator MECC ALTE ECO38 1S/4 C-TYPE threephase is capable of delivering a power of 180KVA complete with AVR digital voltage regulator.

The robust construction of the MECC ALTE ECO38 1S/4 alternator can withstand up to 5G in any direction and 9G vertically. Its design allows easy access to connections and components during routine maintenance checks. The mechanical design has used the most advanced FEM Techniques.

The materials used for the construction of the MECC ALTE of 180KVA structure are: FEP12 steel for the frame, C45 steel for the shaft and cast iron or pressure die-cast aluminum for the end supports: the fans are made of die-cast aluminum or fiberglass reinforced nylon, materials conforming to UL standards. The rotors are dynamically balanced according to grade 2.5 of ISO 1940-1.

In addition to the protection on the same windings, the alternator ECO38 1S/4 alternator can have a higher protection at the inlet. The standard levels are IP23 with further updates available to include input filters, IP43 and IP45: 7%.

Input filters and IP43 are subject to de-rating. 20-30% de-rating applies for IP45 depending on model.

EG43 grey paint, is a high temperature insulating enamel that forms a resistant and flexible film with excellent chemical and moisture protection.

It is water and oil resistant, and also protects the windings from abrasion. It is applied by spraying a layer of coating onto the impregnated winding, or by dipping the stator into a cylinder of paint for superior treatment.

The alternator MECC ALTE of 180KVA is supplied with TOTAL+ treatment, this is a treatment that offers superior performance when the environment is really difficult, or the application is very demanding. TOTAL+ a rubbery treatment, used to replace the encapsulation of epoxy and silicone windings. The flexible black compound cures to a hard, durable coating, sealing copper against moisture and chemical attack. Due to its encapsulation capacity and flexibility, it is also extremely resistant to abrasion of particles as it absorbs impacts.

The alternator is designed and manufactured in ISO 9001 environment. The whole series is manufactured according to the most common specifications such as CEI 2-3, IEC 34-1, EN 60034-1, VDE 0530, BS 4999-5000, NF 51.111, CAN/CSA-C22.2 No14-95-No100-95, NEMA MG 1-2011, ISO 8528-3. Other standards such as UL1446, UL 1004/4 and /B are available upon request.

#### TECHNICAL CHARACTERISTICS MECC ALTE ECO38 1S/4 C-TYPE 180KVA

Phase Type: SinglePhase / ThreePhase  
ThreePhase Maximum Power: 196KVA / 156.8 KW  
Threephase continuous use power: 180KVA / 144 KW  
Singlephase maximum power: 95KVA / 95 KW  
Singlephase continuous use power: 87KVA / 87 KW  
Frequency: 50 - 60 Hz  
Voltage: 230 V / 400 V  
Protection class: IP23  
Alternator speed: 1500 / 1800 rpm  
Number of poles: 4  
Efficiency: 92.6%  
Width: 602.6 mm  
Length: 856 mm  
Height: 824 mm  
Weight: 525 Kg  
Constant speed alternator  
Brushless  
Voltage regulator: DSR (AVR)

Are you looking for an alternator with different characteristics? [HERE](#) you can find the whole MECC ALTE range and other specialized brands

Images and technical data are not binding.

#### Product features:

Phase: Single phase / Three phase  
Maximum power single phase (KW): 95

---

Continuous power single phase (KW): 87  
Maximum power single phase (KVA): 95  
Continuous power single phase (KVA): 87  
Maximum power three phase (KW): 156.8  
Continuous power three phase (KW): 144  
Maximum power three phase (KVA): 196  
Continuous power three phase (KVA): 180  
Frequency (Hz): 50 / 60  
Voltage (V): 230 / 400  
Engine rpm (rpm): 1500 / 1800  
Poles: 4  
Single-phase power (KVA): 95  
Three-phase power (KVA): 196  
Efficiency (%): 92.6  
Protection degree: IP23  
Brushes: No  
PMG: No  
Type of alternator: Constant Speed  
Voltage regulator: AVR  
Weight (Kg): 525