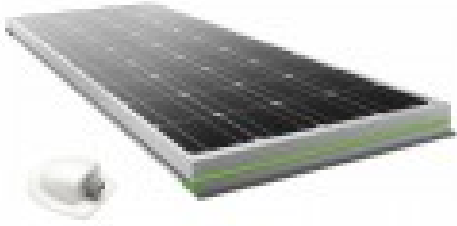


MOSCATELLI MOOVE SP100-S SOLAR PANEL



Product description:

MOSCATELLI MOOVE SP100-S SOLAR PANEL 100W

MOSCATELLI MOOVE SP100-S 100W is a solar panel designed for use in vehicles and campers, particularly efficient with monocrystalline cells.

With a maximum power of 100W, the new MOSCATELLI MOOVE SP100-S module proposed in the dimensions 1580 x 413 x 55 mm solves many drawbacks that usually afflict fixed-mount solar panels installed on recreational vehicles, in particular the problem of encumbrance and the problem, very important on a means of transport, of weight. With a weight contained in only 9 Kg the MOSCATELLI MOOVE 100W module is extremely light compared to a similar traditional solar panel that, mounted on the roof of the camper, generally weighs around 15 Kg.

MOSCATELLI MOOVE SP100-S also, compared to traditional models is a module made of monocrystalline silicon solar cells, which makes them more efficient, compact and durable than polycrystalline models.

The high mechanical resistance allows the MOSCATELLI MOOVE 100W module not to be affected by jolts and vibrations. The supply is completed by the fixing kit for a practical use. The panel is equipped with an exclusive design that allows the installation without fear of wind resistance.

Thanks to this set of peculiarities, the new MOSCATELLI MOOVE 100W photovoltaic modules guarantee a long life in full efficiency. the MOSCATELLI photovoltaic panel is complete with a 6 meter cable and supports.

TECHNICAL CHARACTERISTICS PHOTOVOLTAIC PANEL MOSCATELLI MOOVE SP100-S 100W

Rated power: 100W

Rated voltage: 18V
Rated current : 5.56A
Open circuit voltage: 21.6V
Short circuit current: 5.94A
Maximum system voltage: 1000VDC
Cell Type: Monocrystalline
Cable: 6m
Width: 541 mm
Length: 1230 mm
Height: 55 mm
Weight: 9 Kg

Are you looking for a product with different characteristics? HERE you can find the entire range of MOSCATELLI MOOVE 100W and other specialized brands.

Images and technical data are not binding and subject to change by the manufacturer.

Product features:

Net power (kW): 100 W
Length (mm): 1580
Width (mm): 413
Height (mm): 55
Cell composition: Monocrystalline 156x156 mm
Weight (Kg): 9