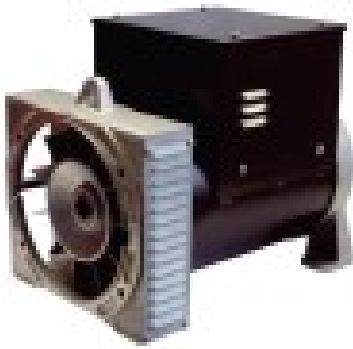


# SINCRO FB2 MA SINGLE- THREE PHASE ALTERNATOR 16.5KVA AVR



## Product description:

Three phase brushless alternator - AVR.

- Insulation class H
- IP23
- Standard voltage 230/400 V - 50 Hz
- Leads 6
- Bearings: Bearings are dimensioned for heavy duty
- Transient features: Transient voltage drop for rated step load at 0.8 power factor is less than 18%
- Single-phase operation: FB2 alternators can be connected for single-phase use

The image is purely indicative.

## Product features:

Phase: Single phase / Three phase

Frequency (Hz): 50

Voltage (V): 230 / 400

Engine rpm (rpm): 3000

Poles: 2

Single-phase power (KW): 8

Single-phase power (KVA): 10

Three-phase power (KW): 13.2

Three-phase power (KVA): 16.5

Efficiency (%): 86.6

Protection degree: IP23

Dry weight (Kg): 64

Brushes: No

Type of alternator: Constant Speed

Voltage regulator: AVR