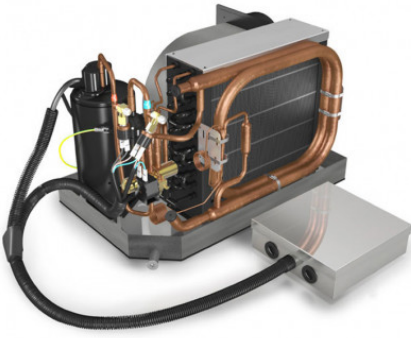


VITRIFRIGO MACS 16000 HEAT PUMP SINGLE- BLOCK NAUTICAL AIR CONDITIONER 16000 BTU/h



Product price:

1.735,00 € tax excluded

Product description:

VITRIFRIGO MACS 16000 HEAT PUMP SINGLE-BLOCK NAUTICAL AIR CONDITIONER 16000 BTU/h

VITRIFRIGO MACS 16000 nautical air conditioner with heat pump in monoblock unit suitable for use on boats, with rated cooling capacity of 16000 BTU/h.

VITRIFRIGO MACS 16000 is designed to ensure maximum comfort and well-being on board, even in extreme weather conditions. The cooling capacity of Vitrifrigo MACS 16000 is 16,000 BTU/h, which means it can cool an area of about 30-35 square meters. The machine has an on-board compressor, which provides greater energy efficiency and quieter operation than other air conditioning units.

The system is equipped with a digital temperature control, which allows the user to set the desired temperature and monitor temperature changes accurately and reliably. In addition, the air filter is easily accessible and replaceable, making machine maintenance very simple.

The design of Vitrifrigo MACS 16000 is compact and durable, with a stainless steel outdoor unit and an indoor unit with a stylish ABS front panel. The indoor unit can be installed in various ways, such as wall or ceiling mounted, depending on the user's needs.

In addition, Vitrifrigo MACS 16000 uses environmentally friendly refrigerant R410A, which has low greenhouse gas emission and meets international environmental standards. This makes it a sustainable choice for those who want a high-quality, environmentally friendly air conditioning system.c

TECHNICAL FEATURES VITRIFRIGO MACS 16000

Phase Type: Single Phase
Power Supply Voltage: 230V
Frequency: 50Hz
Air delivery Ø: 152mm
Condensate discharge pipe Ø: 18 mm
Electrical cabinet dimensions: 245 x 188 x 64 mm
Rated capacity in cooling mode (BTU/h): 16000
Rated capacity in heating mode (BTU/h): 18000
Rated consumption power (cooling mode): 1.1 KW
Rated power consumption (heating mode): 1.3 KW
Rated consumption in cooling mode: 5 A
Rated consumption in heating mode: 5.5 A
Treated air flow rate: 640 mc/h
Recommended pump capacity: 1500 l/h
Width: 557 mm
Depth: 349 mm
Height: 340 mm
Net weight: 31 kg

Looking for a product with different technical characteristics? Here you can find the area dedicated to nautical air conditioners VITRIFRIGO or other specialized brands.

Images and technical data are not binding.

Product features:

Phase: Single phase
Frequency (Hz): 50
Voltage (V): 230
Outlet diameter thread type (mm/inches): 152 - 6
Refrigerating yield: 16000 BTU/h
Heating power: 18000 BTU/h
Absorbed average current, refrigerating (A): 5
Absorbed average current, heater (A): 5.5
Inlet power, refrigerating (KW): 1.1
Inlet power, heater (KW): 1.3
Maximum air flow rate (m³/h): 640
Length (mm): 557
Width (mm): 349
Height (mm): 340
Product type: Air conditioner

Coolant: R410A
Weight (Kg): 31