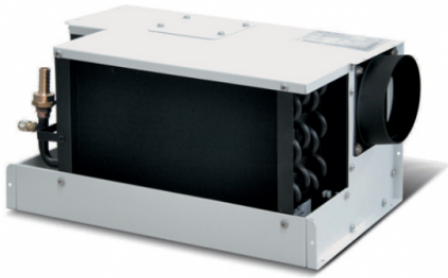


# VITRIFRIGO Fancoil WMF003WF11



**Product price:**

**549,00 € tax excluded**

## **Product description:**

### VITRIFRIGO FANCOIL WMF003WF11

The VITRIFRIGO Fancoil WMF003WF11 represents excellence in the yacht and boat conditioning systems sector, offering high-quality solutions and superior performance. This unit, an integral part of MACS, is designed to ensure optimal comfort on board in any condition.

Featuring an air outlet that can be oriented upwards or laterally with ducting, the VITRIFRIGO Fancoil WMF003WF11 offers unparalleled flexibility in installation and usage. Thanks to its power supply at 230V/1ph/50Hz, it is capable of providing reliable and consistent performance.

With dimensions of 466.5 mm in width, 203.5 mm in height, and 247 mm in depth, the VITRIFRIGO Fancoil WMF003WF11 seamlessly integrates into the surrounding environment, ensuring easy and discreet installation.

Its ability to treat up to 120 cubic meters of air per hour and a nominal power of 3,140 BTU/h ensure effective air conditioning of indoor spaces, ensuring thermal comfort at all times.

Furthermore, with a current draw of only 0.30 A and a power consumption of 57 W, the VITRIFRIGO Fancoil WMF003WF11 offers uncompromising energy efficiency, reducing consumption and optimizing performance.

In conclusion, the VITRIFRIGO Fancoil WMF003WF11 is the ideal solution for those seeking a reliable, efficient, and high-quality conditioning system for yachts and boats. Thanks to its advanced technology and intelligent design, this product is designed to meet even the most demanding needs of shipowners

and navigation enthusiasts. Invest in the VITRIFRIGO Fancoil WMF003WF11 today and ensure unparalleled comfort aboard your vessel.

### Technical specifications VITRIFRIGO Fancoil WMF003WF11:

Power supply: 230V/1ph/50Hz  
Width: 466.5 mm  
Height: 203.5 mm  
Depth: 247 mm.  
Processed air flow rate (mc/h): 120  
Nominal capacity (BTU/h): 3,140  
Absorbed current (A): 0.30  
Absorbed power (W): 57

If you are looking for a Chiller Unit type circulation system, click [HERE](#). You will find similar products.

Images and technical data are not binding and may be subject to revision by the manufacturer.

### Product features:

Length (mm): 247  
Width (mm): 466.5  
Height (mm): 203.6  
Power consumption (W): 57  
Feed Type: 230V/1ph/50Hz  
Absorbed current (A): 0.30  
Portata aria trattata (mc/h): 120  
Rated capacity (BTU/h): 3140