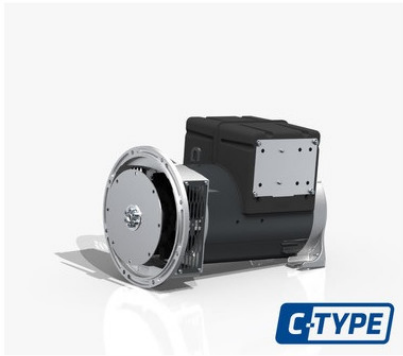


MECC ALTE ECP3-1S/4 THREE PHASE ALTERNATOR 6.5 KVA AVR



Product description:

Mecc Alte ECP3-1S/4 TYPE C 3-Phase 6.5 kVA AVR Generator

The Mecc Alte ECP3-1S/4 TYPE C is a 6.5 kVA three-phase generator designed and built to meet the needs of industrial and professional applications. The ECP3 range, of which the ECP3-1S/4 TYPE C is a part, is fully designed and manufactured in accordance with the ISO 9001 standard. The windings are 2/3-pitch to reduce voltage harmonics and prevent excessive neutral currents in some parallel operating conditions. Some models (excluding ECP3) are equipped with a fully interconnected aluminum or copper damper cage on the rotor. The alternator is capable of withstanding up to 5G in any direction and 9G vertically. The ECP3-1S/4 TYPE C alternator is available with MAUX and DER1/DER2 excitation and regulation systems. The PMG (Permanent Magnet Generator) option is available as a pre-installed or retrofit accessory. The ECP3-1S/4 TYPE C alternator is a reliable and efficient solution for generating three-phase power in industrial and professional settings.

Main alternator features ECP3-1S/4:

Phase type: Three-phase (with the possibility of 12-wire reconnection for single-phase configuration)

Maximum three-phase power: 7 kVA at 50 Hz and 8.4 kVA at 60 Hz

Continuous three-phase power: 6.5 kVA at 50 Hz and 7.8 kVA at 60 Hz

Frequency: 50/60 Hz

Voltage: 230/400 V (with reconnection for alternative configurations)

Protection class: IP23 (IP23 DP, IP23 with IP45 terminal box, IP43 and IP45 options available)

Alternator speed: 1500/1800 rpm

Number of poles: 4

Efficiency: 81.8%

Weight: 59 kg

Brushless: Yes

Voltage regulator: Digital AVR with power supply via auxiliary winding (MAUX)

Compliance with standards: CEI 2-3, IEC 34-1, EN 60034-1, VDE 0530, BS 4999-5000, NF 51.111, NEMA MG 1-2011, ISO 8528-3

This ECP3-1S/4 alternator offers great advantages such as:

Precise and reliable self-regulation: The digital AVR regulator ensures a virtually constant power supply in any operating condition.

Robust and reliable design: The sturdy mechanical structure with IP23 protection class (options available for greater protection) is designed to withstand harsh environmental conditions.

Configuration versatility: The possibility of reconnecting the wires allows the alternator to be configured for different voltages and single-phase or three-phase configurations.

Simplified maintenance: Easy access to components for routine checks and maintenance.

Wide range of accessories: Optional items such as PTC thermistors, air filters, parallel (standard from ECO38), current and voltage transformers, and anti-condensation heaters are available.

Looking for an alternator with different characteristics? [HERE](#) you can find the entire MECC ALTE range or other specialised brands.

Non-binding images and technical data.

Product features:

Phase: Single phase / Three phase

Maximum power single phase (KW): 5

Continuous power single phase (KW): 4.6

Maximum power single phase (KVA): 5

Continuous power single phase (KVA): 4.6

Maximum power three phase (KW): 5.6

Continuous power three phase (KW): 5.2

Maximum power three phase (KVA): 7

Continuous power three phase (KVA): 6.5

Frequency (Hz): 50 / 60

Voltage (V): 230 / 400

Engine rpm (rpm): 1500 / 1800

Poles: 4

Single-phase power (KVA): 6

Three-phase power (KVA): 8.4

Efficiency (%): 81.8

Protection degree: IP23

Acoustic pressure: 58 dB(A) at 7 m

Brushes: No

PMG: No

Type of alternator: Constant Speed

Voltage regulator: AVR

Weight (Kg): 59