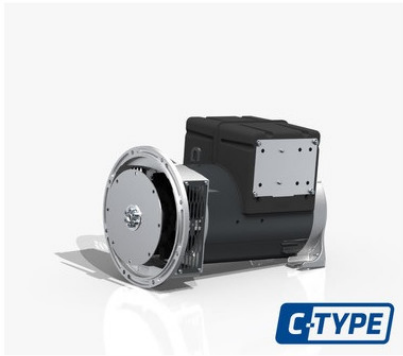


MECC ALTE ECP3-2S/4 THREE PHASE ALTERNATOR 8 KVA AVR



Product description:

MECC ALTE ECP3-2S/4 THREE-PHASE ALTERNATOR 8 KVA AVR

The ECP3-2S/4 alternator is reliability and versatility for industry and the professions. The Mecc Alte ECP3-2S/4 alternator is a reliable and versatile solution for three-phase power generation. **The ECP3-2S/4 alternator has great advantages, such as High three-phase power:** The ECP3-2S/4 alternator offers a maximum three-phase power of 8.8 kVA, ideal for powering industrial or professional machinery. **Reliability and versatility:** The alternator is designed to guarantee high and durable performance in any operating condition. The possibility of configuring the alternator for different voltages and single-phase or three-phase configurations makes it a versatile solution for a wide range of applications. **Construction quality:** The alternator is manufactured from high quality materials and meets the most stringent safety standards. The Mecc Alte ECP3-2S/4 alternator is a reliable and versatile solution for three-phase power generation. Its high performance, versatility and build quality make it an ideal choice for industrial and professional applications.

Main features of the ECP3-2S/4:

Maximum three-phase power: 8.8 kVA
Three-phase continuous power: 8 kVA
Single-phase maximum power: 6.4 kVA
Single-phase continuous use power: 5.8 kVA
Frequency: 50 Hz
Voltage: 230 V / 400 V
Degree of protection: IP23
Alternator speed: 1500 rpm
Number of poles: 4
Efficiency: 83.7
Weight: 60 - 65 Kg

Constant speed alternator
Brushless
Voltage regulator: AVR

Looking for an alternator with different characteristics? [HERE](#) you can find the entire MECC ALTE range or other specialised brands.

Non-binding images and technical data.

Product features:

Phase: Single phase / Three phase
Continuous power single phase (KVA): 5.8
Continuous power three phase (KVA): 8
Frequency (Hz): 50 / 60
Voltage (V): 230 / 400
Engine rpm (rpm): 1500 / 1800
Poles: 4
Single-phase power (KVA): 6.4
Three-phase power (KVA): 8.8
Efficiency (%): 83.7
Protection degree: IP23
Acoustic pressure: 58 dB(A) at 7 m
Brushes: No
PMG: No
Type of alternator: Constant Speed
Voltage regulator: AVR
Weight (Kg): 65
Precision of voltage regulation: $\pm 1\%$