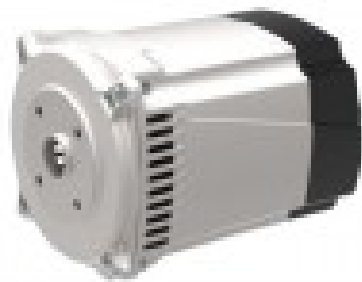




# LINZ SP10S C 2.6 kVA 50 Hz Single-phase Brushless Alternator with Capacitor



## Product description:

The SP series consists of single-phase, brushless, 2-pole alternators with auxiliary winding (charged on the condenser) that ensures voltage regulation.

## CHARACTERISTICS

Compact and easy to assemble  
Possibility of vertical mounting  
Rear or top accessory panel  
High efficiency  
Gamma: Single-phase alternators  
Poles: 2  
Phases: Single-phase  
Adjustment: CONDENSER

## Product features:

Phase: Single phase  
Continuous power single phase (KW): 2.6  
Continuous power single phase (KVA): 2.6  
Frequency (Hz): 50  
Voltage (V): 230  
Engine rpm (rpm): 3000  
Alternator: Synchronous, brushless  
Poles: 2  
Single-phase power (KW): 1.7  
Single-phase power (KVA): 2.6  
Protection degree: IP21  
Motor insulation class: H



Length (mm): 275

Width (mm): 200

Height (mm): 200

Brushes: No

Type of alternator: Constant Speed

Voltage regulator: Capacitor

Weight (Kg): 15