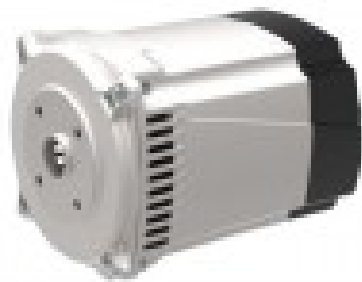




LINZ SP10S C 2.7 kVA 60 Hz Single-phase Brushless Alternator with Capacitor



Product description:

The SP series consists of single-phase, brushless, 2-pole alternators with auxiliary winding (charged on the condenser) that ensures voltage regulation.

CHARACTERISTICS

Compact and easy to assemble
Possibility of vertical mounting
Rear or top accessory panel
High efficiency
Gamma: Single-phase alternators
Poles: 2
Phases: Single-phase
Adjustment: CONDENSER

Product features:

Phase: Single phase
Continuous power single phase (KW): 3.2
Continuous power single phase (KVA): 3.2
Frequency (Hz): 60
Voltage (V): 220
Engine rpm (rpm): 3600
Alternator: Synchronous, brushless
Poles: 2
Single-phase power (KW): 3.2
Single-phase power (KVA): 3.2
Protection degree: IP21
Motor insulation class: H



Length (mm): 275

Width (mm): 200

Height (mm): 200

Brushes: No

Type of alternator: Constant Speed

Voltage regulator: Capacitor

Weight (Kg): 15