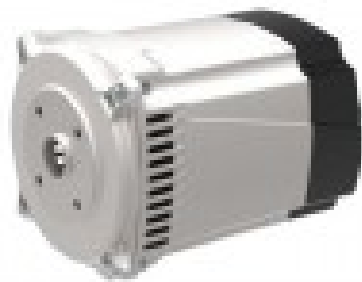


LINZ SP10M F 5 kVA 50 Hz

Single-phase Brushless Alternator with Capacitor



Product description:

The SP series consists of single-phase, brushless, 2-pole alternators with auxiliary winding (charged on the condenser) that ensures voltage regulation.

CHARACTERISTICS

Compact and easy to assemble

Possibility of vertical mounting

Rear or top accessory panel

High efficiency

Gamma: Single-phase alternators

Poles: 2

Phases: Single-phase

Adjustment: CONDENSER

Product features:

Phase: Single phase

Continuous power single phase (KW): 4.2

Continuous power single phase (KVA): 4.2

Frequency (Hz): 50

Voltage (V): 230

Engine rpm (rpm): 3000

Alternator: Synchronous, brushless

Poles: 2

Single-phase power (KW): 4.3

Single-phase power (KVA): 4.2

Protection degree: IP21

Motor insulation class: H

Length (mm): 275

Width (mm): 200

Height (mm): 200

Brushes: No

Type of alternator: Constant Speed

Voltage regulator: Capacitor

Weight (Kg): 19.8