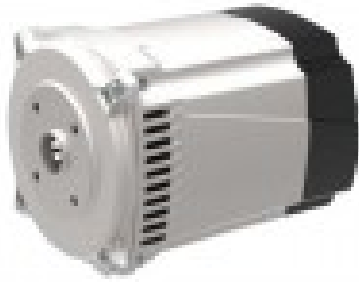


# LINZ SP10M F 5 kVA 60 Hz

## Single-phase Brushless Alternator with Capacitor



### Product description:

The SP series consists of single-phase, brushless, 2-pole alternators with auxiliary winding (charged on the condenser) that ensures voltage regulation.

### CHARACTERISTICS

Compact and easy to assemble  
Possibility of vertical mounting  
Rear or top accessory panel  
High efficiency  
Gamma: Single-phase alternators  
Poles: 2  
Phases: Single-phase  
Adjustment: CONDENSER

### Product features:

Phase: Single phase  
Continuous power single phase (KW): 5  
Continuous power single phase (KVA): 5  
Frequency (Hz): 60  
Voltage (V): 220  
Engine rpm (rpm): 3600  
Alternator: Synchronous, brushless  
Poles: 2  
Single-phase power (KVA): 5  
Protection degree: IP21  
Motor insulation class: H  
Length (mm): 275

---

Width (mm): 200  
Height (mm): 200  
Brushes: No  
Type of alternator: Constant Speed  
Voltage regulator: Capacitor  
Weight (Kg): 19.8