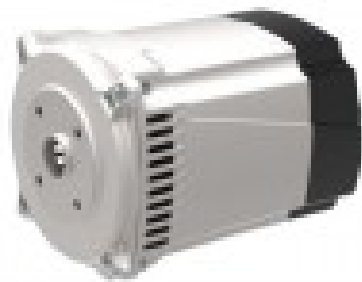




LINZ SP10M G 5 kVA 60 Hz Single-phase Brushless Alternator with Capacitor



Product description:

The SP series consists of single-phase, brushless, 2-pole alternators with auxiliary winding (charged on the condenser) that ensures voltage regulation.

CHARACTERISTICS

Compact and easy to assemble

Possibility of vertical mounting

Rear or top accessory panel

High efficiency

Gamma: Single-phase alternators

Poles: 2

Phases: Single-phase

Adjustment: CONDENSER

Product features:

Phase: Single phase

Continuous power single phase (KW): 6

Continuous power single phase (KVA): 6

Frequency (Hz): 60

Voltage (V): 220

Engine rpm (rpm): 3600

Alternator: Synchronous, brushless

Poles: 2

Single-phase power (KVA): 6

Protection degree: IP21

Motor insulation class: H

Length (mm): 275



Width (mm): 200
Height (mm): 200
Brushes: No
Type of alternator: Constant Speed
Voltage regulator: Capacitor
Weight (Kg): 21